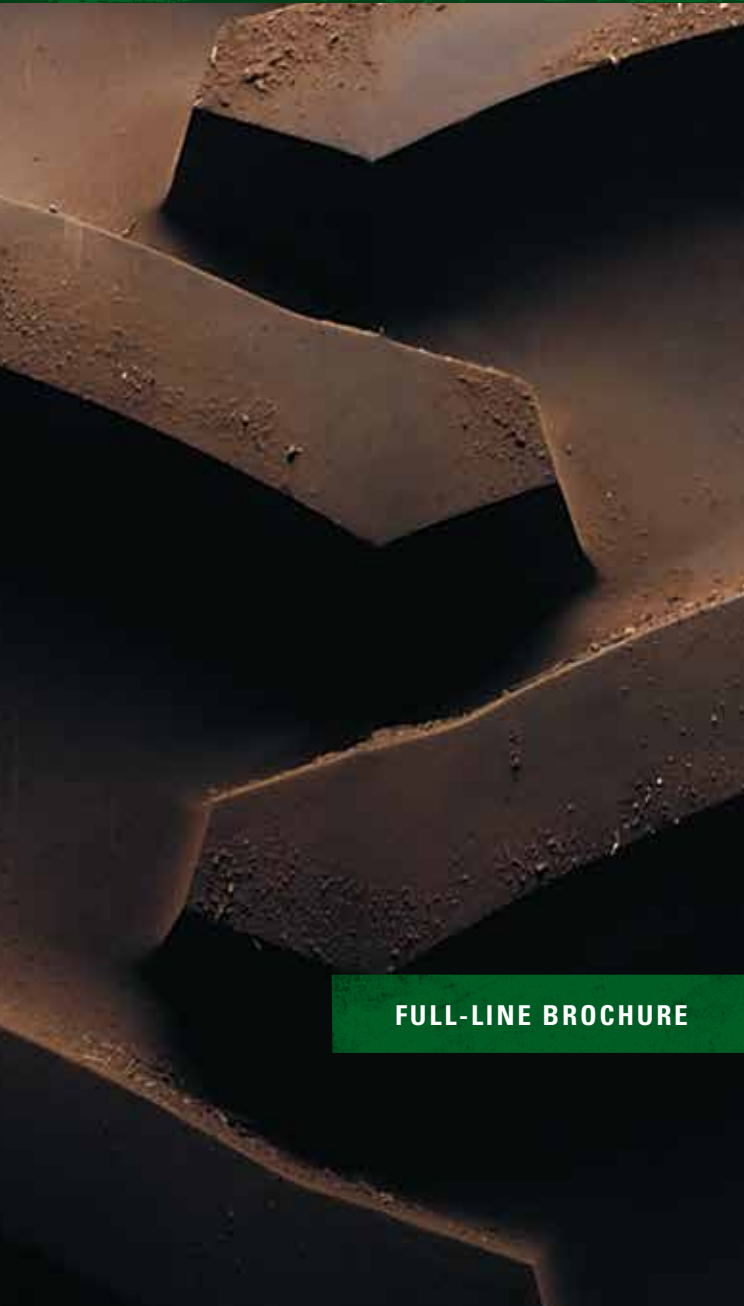


Firestone

FORESTRY TIRES

THE LEADER IN THE FOREST

FORESTRY TIRES



FULL-LINE BROCHURE



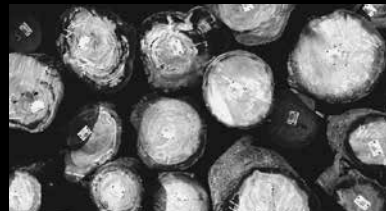
BUILT TO PERFORM

There's a simple rule in today's logging business: You can only make money when you keep the machines moving. Downtime will drain the profits out of any job. Firestone tires give you an edge. No matter what the terrain – rocks, steep hillsides, muddy swamps or anything in between – Firestone has the right tire to meet your needs. Even if flotation and environmental concerns are a priority, you'll find a wide variety of tires and sizes to fit these applications.

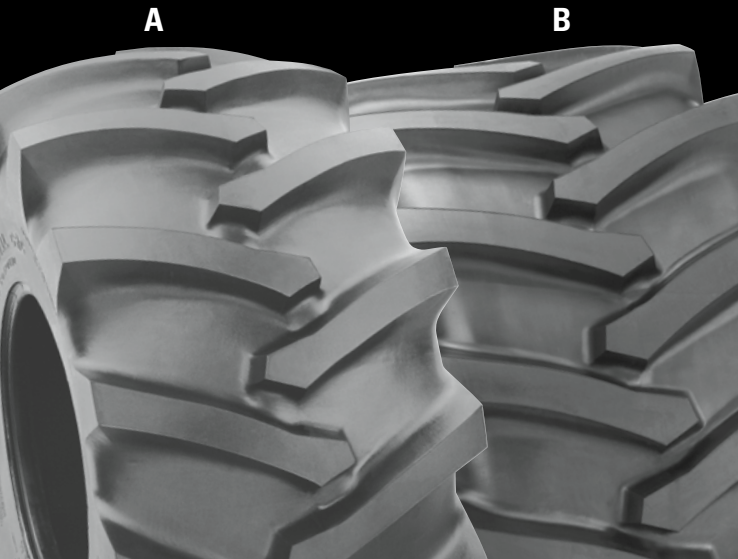
DEMAND MORE

Firestone builds upon its history of working with top equipment manufacturers to stay ahead of the increasing demands of heavy and high-torque machinery. It began in the late 1960s when the first rubber-tired skidders and harvesters appeared. Firestone was the first to adapt farm tires for logging service using heavier lugs and a thicker construction. Many of today's Firestone tires are now built with CRC® (Cut Resistant Compound) to provide a tougher rubber. Firestone tires continue to be The Leader in the Forest because they are proven in every part of North America where timber is harvested. It's a reputation driven by lasting value.

Not only does Firestone offer the strongest tire lineup for the forest, it's also backed by one of the industry's best service networks. A Certified Firestone Forestry Tire Dealer is properly equipped and has an expertly trained staff for on-site service. These technicians know the equipment you work with, and they share your business priorities. If the world demands more from you, you can demand more from Firestone.



FORESTRY SPECIAL W/CRC (WTP) – LS-2



TREADS SOFTLY AND CARRIES THE BIG STICKS.



The standard of the logging industry.

The Forestry Special has earned its tough reputation in the logging industry. Firestone makes it tougher with the addition of CRC® (Cut Resistant Compound).

- 23° tread bars – 25% deeper in the center and up to 42% thicker to protect against cuts, snags and tears*
- Upgraded to meet the demands of higher horsepower and heavier loads
- Heavy-duty bead-and-rim protector keeps out debris

When it comes to strength, durability and value, rely on Firestone forestry tires to carry the load. With their ample steel, heavy rubber and patented compounds, our tires are engineered to perform and built to last.

You'll find that a Firestone forestry tire works when others fail, pays when others cost and is backed by one of the largest, best-trained dealer networks and leading warranties in the business.

Rely on Firestone to carry your big sticks. No other tire has more experience in the forest.

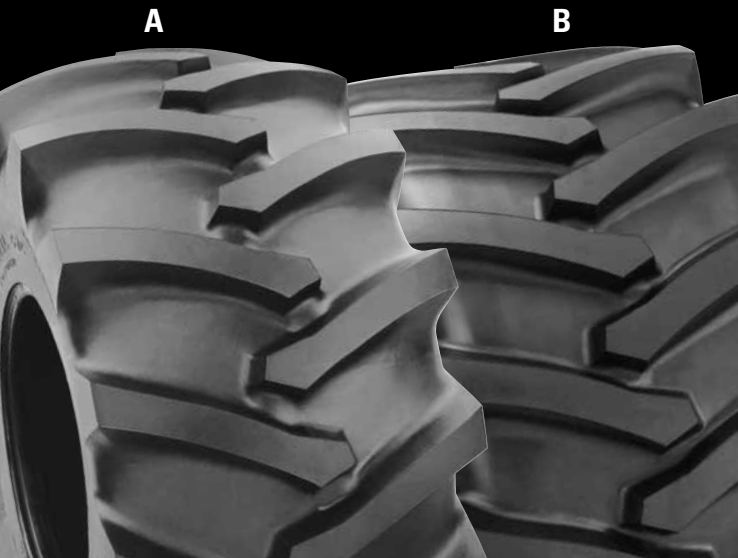
| Tube Type | | | New Tire Dimensions (in.) | | | | Max. Load & Infl. (lbs. @ psi) |
|-------------|------------|------------------|---------------------------|--------------|------------|------------|--------------------------------|
| Tire Size | Ply Rating | Design Rim Width | Overall Width | Overall Dia. | Bar Height | | |
| 18.4-26 (A) | 10 | 16.00 | 18.4 | 56.9 | 2.00 | 7950 @ 30 | |
| 23.1-26 (A) | 10 | 20.00 | 23.1 | 63.5 | 2.10 | 10000 @ 25 | |
| 23.1-26 (A) | 14 | 20.00 | 23.1 | 63.5 | 2.10 | 12700 @ 35 | |
| 23.1-26 (A) | 20 | 20.00 | 23.1 | 63.5 | 2.10 | 14980 @ 45 | |
| 16.9-30 (A) | 10 | 15.00 | 16.9 | 59.2 | 1.90 | 7950 @ 35 | |
| 18.4-34 (A) | 10 | 16.00 | 18.4 | 65.2 | 2.00 | 8950 @ 30 | |

| Tubeless | | | New Tire Dimensions (in.) | | | | Max. Load & Infl. (lbs. @ psi) |
|----------------|------------|------------------|---------------------------|--------------|------------|------------|--------------------------------|
| Tire Size | Ply Rating | Design Rim Width | Overall Width | Overall Dia. | Bar Height | | |
| 28L-26 (A) | 12 | 25.00 | 28.1 | 64.5 | 2.20 | 11600 @ 25 | |
| 28L-26 (A) | 14 | 25.00 | 28.1 | 64.5 | 2.20 | 13100 @ 30 | |
| 24.5-32 (A) | 16 | 21.00 | 24.5 | 70.9 | 2.20 | 15400 @ 35 | |
| 30.5L-32 (A) | 20 | 27.00 | 30.5 | 74.0 | 2.20 | 18500 @ 35 | |
| DH35.5LB32 (B) | 20 | 31.00 | 35.5 | 79.2 | 2.53 | 22500 @ 30 | |

* Compared to Firestone Traction Field & Road.

'L' in tire size designates low-profile tire.

FORESTRY SPECIAL SEVERE SERVICE – LS-2



A tough design goes tubeless.

In addition to the features of the regular Forestry Special, the Forestry Special Severe Service gives you:

- Tubeless design for less expense and downtime
- Rugged CRC rubber that resists snags and tears
- Upgrades to meet the demands of higher-horsepower machines and heavier loads
- 23° tread bars, which are 25% deeper and up to 42% thicker to protect against cuts, snags and tears

| Tubeless | | | New Tire Dimensions (in.) | | | Max. Load & Infl. (lbs. @ psi) |
|----------------|------------|------------------|---------------------------|--------------|------------|--------------------------------|
| Tire Size | Ply Rating | Design Rim Width | Overall Width | Overall Dia. | Bar Height | |
| 28L-26 (A) | 16 | 25.00 | 28.1 | 64.5 | 2.20 | 14700 @ 35 |
| 30.5L-32 (A) | 26 | 27.00 | 30.5 | 74.0 | 2.20 | 22000 @ 45 |
| DH35.5LB32 (B) | 24 | 31.00 | 35.5 | 79.2 | 2.53 | 24700 @ 35 |

* 'L' in tire size designates low-profile tire.

YOU KNOW WHERE OUR TIRES COME FROM. WE KNOW WHERE THEY'RE GOING.

Foreign manufacturers may build their tires to look like Firestone tires, but that doesn't mean they perform like them. Firestone tires are built for the meanest, toughest, most difficult conditions in North America, with patented compounds, unsurpassed strength and durability like no other.

Logging is no place for amateurs or imitators – not for the people who work there and not for the tires they depend on. Rely on Firestone forestry tires to deliver the performance and value you need when it matters most.



FORESTRY ENVIRONMENTAL LUG (EL) 600/700 – HF-1



Designed for use on forwarders and harvesters.

- 23° tread bars for excellent traction
- 20 PR construction for handling heavy loads
- Steel tread plies for resistance to punctures
- Special tread and sidewall rubber compounds for resistance to cuts, snags, tears and impacts
- Tread designated as “environmental lug” (EL) for reduced ground disturbance

| Tubeless | | | New Tire Dimensions (in.) | | | Max. Load & Infl. (lbs. @ psi) |
|-------------|------------|------------------|---------------------------|--------------|------------|--------------------------------|
| Tire Size | Ply Rating | Design Rim Width | Overall Width | Overall Dia. | Bar Height | |
| 710/45B26.5 | 20 | 24.00 | 28.0 | 52.8 | 1.00 | 15200 @ 73 |

YOU ARE JUST
23° AWAY
FROM BETTER
TRACTION AND
REDUCED
DOWNTIME.

- 23° is the optimum bar angle for traction and wear, and Firestone holds the trademark
- Open center tread cleans better in muddy conditions
- High-angle stabilizer belts deliver strength and fuel economy
- Dual rubber compounds
 - Flexible rubber in sidewall for less fatigue and cracking
 - Hard rubber tread takes a pounding for long, reliable wear
 - Many designs offer rugged CRC rubber for added protection

FLOTATION 23° DEEP TREAD (WTP) LOGGER – HF-3



Deep skid depth and wide footprint for maximum flotation on soft ground.

- 23° tread bars and 1.8" to 2.5" tread depth – an excellent combination of flotation and traction
- Fuel savings could be as high as 40% over a narrower tire – depending on type of service, terrain, machine and operator
- Rounded shoulder to minimize soil disturbance during turns

| Tubeless | | | New Tire Dimensions (in.) | | | | |
|-------------|------------|------------------|---------------------------|--------------|------------|--------------------------------|--|
| Tire Size | Ply Rating | Design Rim Width | Overall Width | Overall Dia. | Bar Height | Max. Load & Infl. (lbs. @ psi) | |
| 54x37.00-25 | 12 | 32.00 | 37.0 | 56.3 | 1.90 | 13000 @ 35 | |
| 54x37.00-25 | 20 | 32.00 | 37.0 | 56.3 | 1.90 | 16900 @ 55 | |
| 66x43.00-25 | 14 | 36.00 | 41.5 | 67.8 | 2.30 | 19400 @ 35 | |
| 66x43.00-26 | 14 | 36.00 | 41.5 | 67.8 | 2.30 | 19000 @ 35 | |
| 73x44.00-32 | 16 | 36.00 | 42.0 | 74.3 | 2.40 | 24000 @ 40 | |
| 76x50.00B32 | 16 | 44.00 | 48.6 | 78.5 | 2.50 | 25400 @ 35 | |

FLOTATION 23° DEEP TREAD (WTP) LOGGER – HF-4



An extra-deep skid for maximum pull and traction in wet, swampy areas.

- 23° tread for excellent traction
- 3.5" tread depth – provides access to previously inaccessible areas
- Special rubber compounds for resistance to cuts, snags and tears
- Steel-cord belts for impact and puncture resistance

| Tubeless | | | New Tire Dimensions (in.) | | | | |
|-------------|------------|------------------|---------------------------|--------------|------------|--------------------------------|--|
| Tire Size | Ply Rating | Design Rim Width | Overall Width | Overall Dia. | Bar Height | Max. Load & Infl. (lbs. @ psi) | |
| 67x34.00-25 | 14 | 30.00 | 33.7 | 69.2 | 3.50 | 20900 @ 40 | |
| 67x34.00-26 | 14 | 30.00 | 33.7 | 69.2 | 3.50 | 20900 @ 40 | |

FLOTATION 23° EXTRA-DEEP TREAD LOGGER – HF-4



Extra-deep tread for maximum traction.

- 1" deeper tread bars than Firestone HF-3 flotation tire for maximum traction in the toughest conditions
- Special wide-arc design to protect sidewall from cuts and snags
- 23° bar angle for good ground contact and excellent traction
- Four steel-cord belts and 14 PR construction for additional impact and puncture resistance
- Rounded shoulder to minimize ground disturbance

| Tubeless | | | New Tire Dimensions (in.) | | | Max. Load & Infl. (lbs. @ psi) |
|-------------|------------|------------------|---------------------------|--------------|------------|--------------------------------|
| Tire Size | Ply Rating | Design Rim Width | Overall Width | Overall Dia. | Bar Height | |
| 66x43.00-25 | 14 | 36.00 | 41.5 | 70.7 | 3.40 | 19400 @ 35 |
| 66x43.00-26 | 14 | 36.00 | 41.5 | 70.7 | 3.40 | 19000 @ 35 |

FORESTRY TIRES TIRES LISTED BY SIZE

| Tire Size | Ply | Description | Material Number | Page |
|-------------|-----|--|-----------------|------|
| 54x37.00-25 | 12 | Flotation 23 DT (WTP) Logger TLHF3 | 352-063 | 11 |
| 54x37.00-25 | 20 | Flotation 23 DT (WTP) Logger TLHF3 | 373-102 | 11 |
| 66x43.00-25 | 14 | Flotation 23 DT (WTP) Logger TLHF3 | 354-392 | 11 |
| 66x43.00-25 | 14 | Flotation 23 EDT Logger TLHF4 | 354-325 | 13 |
| 67x34.00-25 | 14 | Flotation 23 DT (WTP) Logger TLHF4 | 354-902 | 12 |
| 18.4-26 | 10 | Forestry Special W/CRC (WTP) TLLS2 | 361-771 | 5 |
| 23.1-26 | 10 | Forestry Special W/CRC (WTP) TLLS2 | 361-798 | 5 |
| 23.1-26 | 14 | Forestry Special W/CRC (WTP) TLLS2 | 361-801 | 5 |
| 23.1-26 | 20 | Forestry Special W/CRC (WTP) TLLS2 | 000-407 | 5 |
| 28L-26 | 12 | Forestry Special W/CRC (WTP) TLLS2 | 362-477 | 6 |
| 28L-26 | 14 | Forestry Special W/CRC (WTP) TLLS2 | 362-494 | 6 |
| 28L-26 | 16 | Forestry Special SS TLLS2 | 362-511 | 7 |
| 66x43.00-26 | 14 | Flotation 23 DT (WTP) Logger TLHF3 | 354-422 | 11 |
| 66x43.00-26 | 14 | Flotation 23 EDT Logger TLHF4 | 354-333 | 13 |
| 67x34.00-26 | 14 | Flotation 23 DT (WTP) Logger TLHF4 | 354-899 | 12 |
| 710/45B26.5 | 20 | Forestry Environ. Lug (EL) 600/700 TLHF1 | 371-623 | 9 |
| 16.9-30 | 10 | Forestry Special W/CRC (WTP) TLLS2 | 361-844 | 5 |
| 24.5-32 | 16 | Forestry Special W/CRC (WTP) TLLS2 | 364-704 | 6 |
| 30.5L-32 | 20 | Forestry Special W/CRC (WTP) TLLS2 | 371-538 | 6 |
| 30.5L-32 | 26 | Forestry Special SS TLLS2 | 371-555 | 7 |
| 73x44.00-32 | 16 | Flotation 23 DT (WTP) Logger TLHF3 | 343-366 | 11 |
| 76x50.00B32 | 16 | Flotation 23 DT (WTP) Logger TLHF3 | 359-130 | 11 |
| DH35.5LB32 | 20 | Forestry Special W/CRC (WTP) TLLS2 | 371-572 | 6 |
| DH35.5LB32 | 24 | Forestry Special SS TLLS2 | 371-606 | 7 |
| 18.4-34 | 10 | Forestry Special W/CRC (WTP) TLLS2 | 361-887 | 5 |



FORESTRY TIRES

**LIMITED WARRANTY/ STUBBLE DAMAGE POLICY/
FIELD HAZARD POLICY**
FOR FIRESTONE FORESTRY TIRES

WARRANTY



TIRES COVERED

This Limited Warranty covers original tread Firestone brand logger service, wire tread ply tires if they are used in normal logging service. It does not cover tires marked "NO ADJ" or "NA" (non-adjustable), or tires not containing the Firestone serial number. Tires branded DT (damaged tire) are not adjustable for appearance.

WHAT IS WARRANTED

If, before wearing down to 2/32nds of an inch of tread or bar depth remaining, and before the end of the fifth year of service (proof-of-purchase required) or before the end of the fifth year from date of manufacture (date molded in sidewall of tire); any tire covered by this Limited Warranty becomes unusable for any reason within the manufacturer's control, such tire will be replaced with an equivalent new Firestone tire on the basis set forth in the section titled "Replacement Price" below. Some examples of causes or conditions normally beyond the manufacturer's control are:

1. Forest or road hazards (e.g., cut, snag, puncture, impact, bruise break, stone drill, projection rub, tear or chunk in tread, bar or shoulder);
2. Apparent overload or improper inflation pressure;
3. Wheel misalignment, rim slip, tire/wheel assembly imbalance, mismatching of adjacent tires or other vehicle conditions, defects or characteristics;
4. Improper repair or improper insertion of sealant, or improper balancing of filler materials;

LIMITED WARRANTY
FOR FIRESTONE FORESTRY TIRES

5. Intentional alteration of either the appearance or the physical characteristics of the tire;
6. Conditions caused by aging or improper storage or severe service;
7. Failure to observe any of the "Owner-User's Obligations" items listed elsewhere in this publication;
8. Mounting damage or other abuse.

For logger tires used in normal logging service, this Limited Warranty ends at the end of the fifth year of service if proof-of-purchase is available, or at the end of the fifth year from date of manufacture if no proof-of-purchase is available.

For logger tires used in earthmoving service, this Limited Warranty ends after the fifth year of service if proof-of-purchase is available, or at the end of the fifth year from date of manufacture if no proof-of-purchase is available.

This Limited Warranty is in addition to, and/or may be limited by, any other applicable written warranty you may have received concerning special tires or situations.

REPLACEMENT PRICE

Tires adjusted under this Limited Warranty will be replaced free of charge (except for mounting and service fees) during the first 10% of treadwear; thereafter, to determine the replacement price, the percent of treadwear is multiplied by the owner-user's regular buying price. Taxes, mounting fees or other service charges will be added to the replacement price.

LIMITED WARRANTY
FOR FIRESTONE FORESTRY TIRES

CONDITIONS AND EXCLUSIONS

To the extent permitted by law, Bridgestone Americas Tire Operations, LLC disclaims all warranties express or implied other than the warranties stated in this Limited Warranty, including but not limited to the implied warranties of merchantability and fitness for a particular purpose.

TO THE EXTENT PERMITTED BY LAW, BRIDGESTONE AMERICAS TIRE OPERATIONS, LLC DISCLAIMS LIABILITY FOR ANY SPECIAL, INCIDENTAL, CONSEQUENTIAL AND PUNITIVE DAMAGES, LOSS OF TIME OR PROFITS, LOSS OF VEHICLE USE, AND INCONVENIENCE, EVEN IF ADVISED OF THE POSSIBILITY OF SUCH LOSS OR DAMAGES.

Some states do not allow the exclusion or limitation of incidental or consequential damages, so the above limitation or exclusion may not apply to you.

Only the actual owner-user of the covered tires may make an adjustment claim under this Limited Warranty and Commercial Adjustment Policy and only for tires used in the 50 United States and the District of Columbia.

Nothing in this Limited Warranty is intended to be a representation that failures cannot occur.

OWNER-USER'S OBLIGATIONS

Proper tire care is necessary to obtain maximum hours of usage and wear.

The owner-user's obligations are to operate tires within

FORESTRY TIRE USAGE



| | LS-2 Single | LS-2 Dual | Severe Service | Forestry Environmental Lug* | HF-3 | HF-4 |
|-------------------------------|-------------|-----------|----------------|-----------------------------|------|------|
| Normal Logging | X | X | X | X | X | |
| Environmentally Fragile Areas | | X | | X | X | |
| Swamp Logging | | X | | | X | X |
| Steep Hillsides | X | X | X | X | X | |
| CRC® Rubber | X | X | X | | | |

* Formerly HF-2. Used on forwarders and processors.

Note: Severe Service (available in selected LS-2 sizes) features high ply ratings and cut resistant construction for severe conditions.

Source: Bridgestone Americas Tire Operations, LLC

PERFORMANCE REMINDER

Overloading and incorrect air pressure are two of the greatest causes of premature tire removal. For the best performance possible, select properly designed, sized and ply-rated tires for your equipment, and operate the tires at the inflation pressure required to carry the working load. Detailed load and inflation tables are included in the Firestone Farm Tire Data Book or at FirestoneForestry.com.

PROPER TIRE SIZES

Tire sizes and ratings are dictated by vehicle geometry, weight and power. Before changing tire sizes, be sure to check with the equipment manufacturer or dealer. Tire measurements and load-carrying capacities for all Firestone agricultural tires are shown in the Firestone Farm Tire Data Book or at FirestoneForestry.com. These measurements are especially important when matching front and rear sizes.

Notes:

In logging operations using LS-2 and LS-3 tires at a maximum speed of 5 mph, the tire load limits may be increased by 10% with no increase in inflation pressure.

In logging operations using flotation tires at a maximum speed of 5 mph, the tire load limits may be increased by 40% with no increase in inflation pressure.

